



宁波双舰五金有限公司

SHUANGJIAN HARDWARE CO.,LTD

外贸销售部联络方式 / SALES DEPARTMENT:

座机 / Tel: 86-574-63702093

传真 / Fax: 86-574-63702093

地址: 浙江省慈溪市文华南路 125 弄 55 号 7-1 室

Address: RM7-1, Building55, No.125 South WenhuaRd,
Cixi, Ningbo, Zhejiang, China

工厂联络方式 / MANUFACTURER:

座机 / Tel: 86-574-63592007

传真 / Fax: 86-574-63592380

地址: 中国·浙江·慈溪市新浦镇工一路 1 号

Address: No.1 Gongyi Rd, Xinpu Town, Cixi, Ningbo, Zhejiang, China

网址 / web: www.sjwjtools.com

阿里巴巴 / Alibaba: shop1395334493002.1688.com

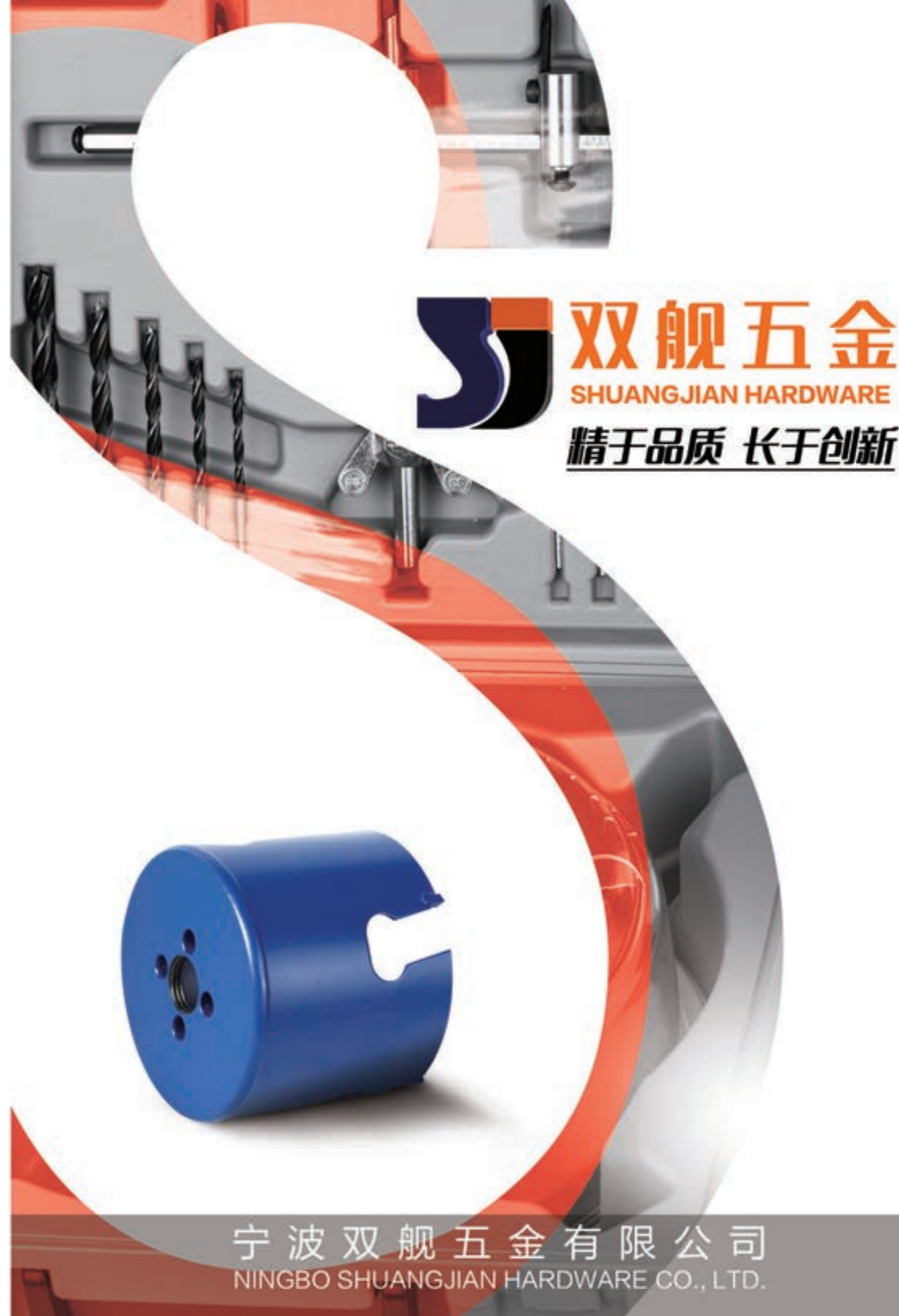
阿里巴巴英文 / Alibaba International: nbshuangjian.en.alibaba.com



微信二维码
Wechat



网站二维码
Website



双舰五金
SHUANGJIAN HARDWARE
精于品质 长于创新

宁波双舰五金有限公司
NINGBO SHUANGJIAN HARDWARE CO., LTD.

目录 CONTENTS

1	公司简介 COMPANY PROFILE	1~3
2	硬质合金开孔器 TCT CARBIDE HOLE SAW	4~7
3	快换导向 QUICK ADAPTER	8~9
4	合金开孔器套装 TCT HOLE SAW KIT	10~11
5	可调节式开孔器 ADJUSTABLE HOLE SAW	12~17
6	钢板开孔器 METAL SHEET PUNCH	18~19
7	螺栓螺母取出器 DAMAGED BOLTS & NUTS EXTRACTORS	20~21
8	孔锯接杆 HOLE SAW ARBOR	22~27
9	双金属孔锯 BI-METAL HOLE SAW	28~29

SHUANGJIAN HARDWARE

走进双舰 / Welcome to the Shuangjian

宁波双舰五金有限公司坐落于世界上最长的跨海大桥南岸，风景秀丽的慈溪，毗邻未来国际金融中心上海和天然良港北仑港，交通十分便利，经济区位优势日益明显。

是一家专业生产各种非标五金工具开孔器的新型企业，产品包括：硬质合金孔锯开孔器 TCT，孔锯接杆 Arbor，可调节开孔器等，以及钢板开孔器和螺母取出器。我们拥有自己专利的快速接杆转换器保证了孔锯方便快捷优良的连接性能。我们还生产有各种规格的木工刀 ... 本公司根据客户的图纸定制五金工具产品。

“精于品质、长于创新”是公司赖以生存的基础，也是进军各类五金市场的保证。在新的时期里，公司秉承“诚实经营求信，质量第一求进”的经营理念，锐意进取，刻苦创新。

NINGBO SHUANGJIAN HARDWARE CO., LTD is established in 1982, is located in Xinpu Town, next to the beautiful and rich Hangzhou Bay, which is an inspiring place full of outstanding people.

We specialized in manufacturing TCT alloy hole saws, hole saw arbor, adjustable circular hole saw, damaged bolt remover set, steel hole saw, etc. Especially, we got a patent for the quick adapter which is used for TCT hole saw.

We will endeavor to provide the best products and professional service to your every customer with our management philosophy “Developing with sincerity, succeeding with quality.” We look very much forward to a further trustful and successful cooperation.



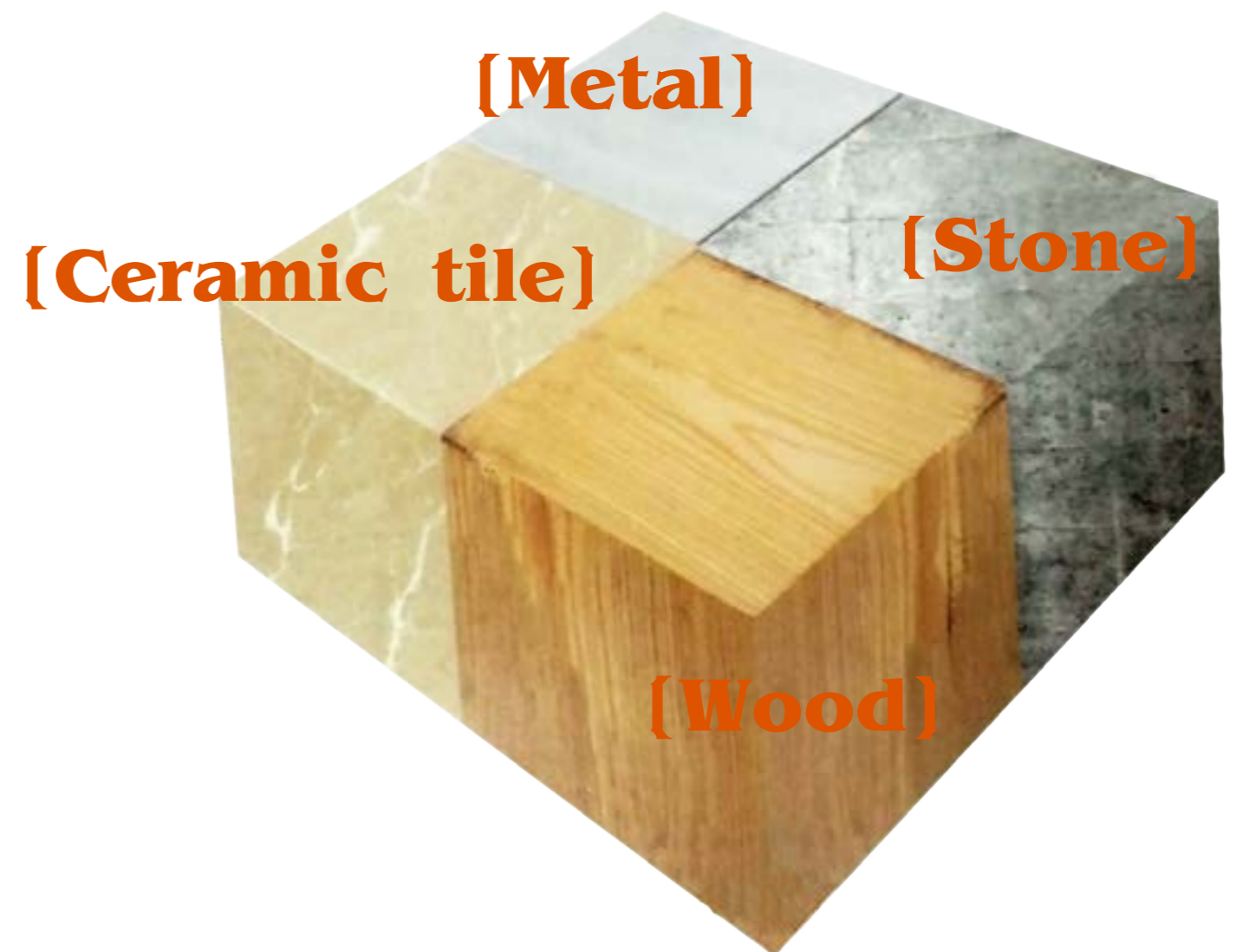


企业文化 / Company Culture
一锯在手，开孔无忧！
A hole saw in the hand, solve all you need!

企业理念 / Corporate philosophy
以人为本·技术创新
People-oriented • Technology innovation

企业精神 / The spirit of enterprise
智慧、勇敢、务实
Wisdom, Courage, Pragmatism

企业宗旨 / Corporate purposes
以客为本、以质求存、以优取胜
Customer-oriented Survive by quality
Compete through excellence



硬质合金开孔器

T.C.T HOLE SAWS



应用材料 / Applicable materials

应用于实木板, 硬木板, 密度板, 刨花板, 胶合板, 面板石膏板, 硅胶钙板, PVC板, 塑胶板, 钙粉人造板, 瓷砖硬质泡沫, 薄钢板, 薄铜板, 薄铁板, 铝板等。

The range is 16mm to 330mm. The length is 60mm and 165mm.

Application to solid wood boards, hard wood board, M DF, chipboard, plywood, plasterboard, PVC, hard rubber sheet, ceramic, rigid foamed plastics etc.

sheet steel, sheet copper, sheet iron, sheet aluminum etc.



技术参数

TECHNICAL PARAMETERS

Specifications(D)			Specifications(D)			Specifications(D)			Specifications(D)		
Metric	British system	Length(L)	Metric	British system	Length(L)	Metric	British system	Length(L)	Metric	British system	Length(L)
16	5/8	52	62	2-7/16	60	112	4-13/32	60	162	6-3/8	60
17	11/16	52	63	2-15/32	60	113	4-29/64	60	163	6-29/64	60
18	23/32	52	64	2-1/2	60	114	4-1/2	60	164	6-29/64	60
19	3/4	56	65	2-9/16	60	115	4-17/32	60	165	6-1/2	60
20	25/32	56	66	2-19/32	60	116	4-9/16	60	166	6-17/32	60
21	13/16	56	67	2-5/8	60	117	4-39/64	60	167	6-37/64	60
22	7/8	56	68	2-11/16	60	118	4-41/64	60	168	6-5/8	60
23	29/32	56	69	2-23/32	60	119	4-11/16	60	169	6-21/32	60
24	15/16	56	70	2-3/4	60	120	4-23/32	60	170	6-11/16	60
25	1	56	71	2-51/64	60	121	4-3/4	60	171	6-47/64	60
26	1-1/32	56	72	2-5/6	60	122	4-13/16	60	172	6-49/64	60
27	1-1/16	56	73	2-7/8	60	123	4-27/32	60	173	6-13/16	60
28	1-1/8	56	74	2-29/32	60	124	4-7/8	60	174	6-27/32	60
29	1-1/8	56	75	2-15/16	60	125	4-59/64	60	175	6-57/64	60
30	1-3/16	56	76	3	60	126	4-31/32	60	176	6-59/64	60
31	1-7/32	56	77	3-1/32	60	127	5	60	177	6-31/32	60
32	1-1/4	56	78	3-1/16	60	128	5-1/32	60	178	7	60
33	1-5/16	56	79	3-1/8	60	129	5-5/64	60	179	7-1/20	60
34	1-11/32	56	80	3-5/32	60	130	5-1/8	60	180	7-3/32	60
35	1-3/8	56	81	3-3/16	60	131	5-5/32	60	181	7-1/8	60
36	1-13/32	56	82	3-7/32	60	132	5-3/16	60	182	7-11/64	60
37	1-7/16	60	83	3-1/4	60	133	5-7/32	60	183	7-13/64	60
38	1-1/2	60	84	3-5/16	60	134	5-9/32	60	184	7-1/4	60
39	1-17/32	60	85	3-11/32	60	135	5-5/16	60	185	7-9/32	60
40	1-9/16	60	86	3-3/8	60	136	5-23/64	60	186	7-21/64	60
41	1-5/8	60	87	3-27/64	60	137	5-25/64	60	187	7-23/64	60
42	1-21/32	60	88	3-15/32	60	138	5-7/16	60	188	7-13/32	60
43	1-11/16	60	89	3-1/2	60	139	5-15/32	60	189	7-7/16	60
44	1-3/4	60	90	3-35/64	60	140	5-1/2	60	190	7-31/64	60
45	1-25/32	60	91	3-19/32	60	141	5-35/64	60	191	7-33/64	60
46	1-13/16	60	92	3-5/8	60	142	5-19/32	60	192	7-9/16	60
47	1-27/32	60	93	3-21/32	60	143	5-5/8	60	193	7-19/32	60
48	1-7/8	60	94	3-45/64	60	144	5-43/64	60	194	7-41/64	60
49	1-15/16	60	95	3-3/4	60	145	5-45/64	60	195	7-43/64	60
50	1-31/32	60	96	3-25/32	60	146	5-3/4	60	196	7-23/32	60
51	2	60	97	3-53/64	60	147	5-25/32	60	197	7-3/4	60
52	2-1/16	60	98	3-55/64	60	148	5-53/64	60	198	7-51/64	60
53	2-3/32	60	99	3-29/32	60	149	5-55/64	60	199	7-53/64	60
54	2-1/8	60	100	3-11/12	60	150	5-29/32	60	200	7-7/8	60
55	2-11/64	60	101	3-31/32	60	151	5-15/16	60	201	7-29/32	60
56	2-13/64	60	102	4	60	152	6	60	202	7-61/64	60
57	2-1/4	60	103	4-1/16	60	153	6-1/40	60	203	8	60
58	2-9/32	60	104	4-3/32	60	154	6/1/16	60	204	8-1/32	60
59	2-5/16	60	105	4-1/8	60	155	6-3/32	60	205	8-1/16	60
60	2-3/8	60	106	4-11/64	60	156	6-1/8	60	206	8-7/64	60
61	2-13/32	60	107	4-7/32	60	157	6-3/16	60	207	8-5/32	60
			108	4-1/4	60	158	6-7/32	60	208	8-3/16	60
			109	4-5/16	60	159	6-1/4	60	209	8-15/64	60
			110	4-1/3	60	160	6-5/16	60	210	8-17/64	60
			111	4-3/8	60	161	6-11/16	60			

★ Dia.: 16mm-330mm. Depth: 60mm & 165mm Accept any length order

产品特点

FEATURES

采用无缝钢管，优势在于同心度好，提高扭矩，整体美观。

采用高品质硬质合金，在遇到木板中有硬物时（如钉子等），能很好的切除。另有 165mm 高度的特制孔锯，供客户选择。

The T.C.T. Hole cutter is made of seamless steel tube. It has great concentricity, improves torque and beautiful surface.

We provide high quality alloy blades. The alloy blades make excellent job to cut very easy when they meet some hard objects like nails in the wood.

We have 60mm and 165mm length TCT hole saw. And we accept any length order for customers.



细节展示

SHOW DETAILS



齿部细节：采用高品质的硬质合金，使用寿命长



EASY



后盖细节：采用最新的加工工艺结实，美观。



The teeth details: It used by high quality alloy blades to make the carbide tipped hole saw has long lifetime.

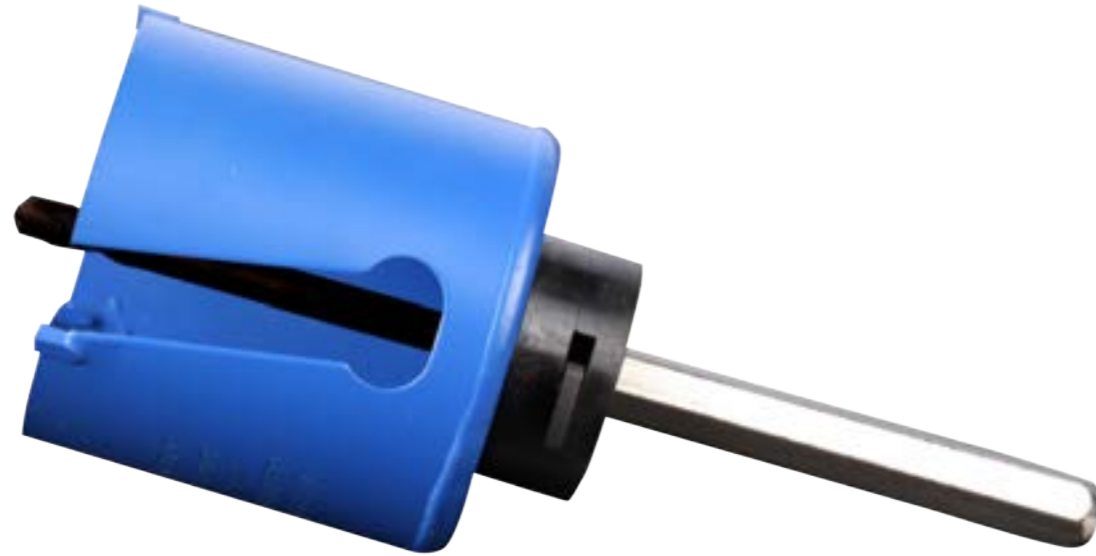


Back plate details:It using the latest welding technology to make the hole saw strong and beautiful



快换导向

QUICK ADAPTER



快换的四大优势:

1. 快速更换开孔器
2. 能实现扩大孔径
3. 能快速退芯
4. 可钻斜孔

使用高强度材料, 适配与 5/8-18, 1/2-20 所有规格的开孔器作业, 产品无需改装, 也不用拆卸更换, 可以极大提高工作效率。

Five Advantages of quick adapter:

1. Change Diameter with one click
2. Drop out the core at the push of a button
3. Enlarge holes that were drilled too small
4. Cut at an angle
5. All-in-one kit for all you hole cutting needs

The quick adapter used by high quality material. It can be adapt to 5/8-18 and 1/2-20 all kinds of hole saw. Quick adapter mandrel system for a quick and easy change with no down time and prevent hole saws from locking to the mandrel. It can be improve the work efficiency greatly.

快换导向

QUICK ADAPTER



专利证书

PATENT CERTIFICATE



合金开孔器套装

TCT HOLE SAW SET



Spare center drill HSS



Rim countersink for $\Phi 68\text{mm}$



1. Easy to chamfering
2. Change Diameter with one click
3. Adapt to normal hole saw arbor and quick adapter
4. Drop out the core at the push of a button
5. Enlarge holes that were drilled too small
6. Cut at an angle
7. All-in-one kit for all you hole cutting needs
8. It's very flexible and convenient.

产品套装

PRODUCT SET



✳ 根据客户需要，自由搭配套装。

It's free to collocate kit that according to customer need

可调节式开孔器

ADJUSTABLE HOLE SAWS



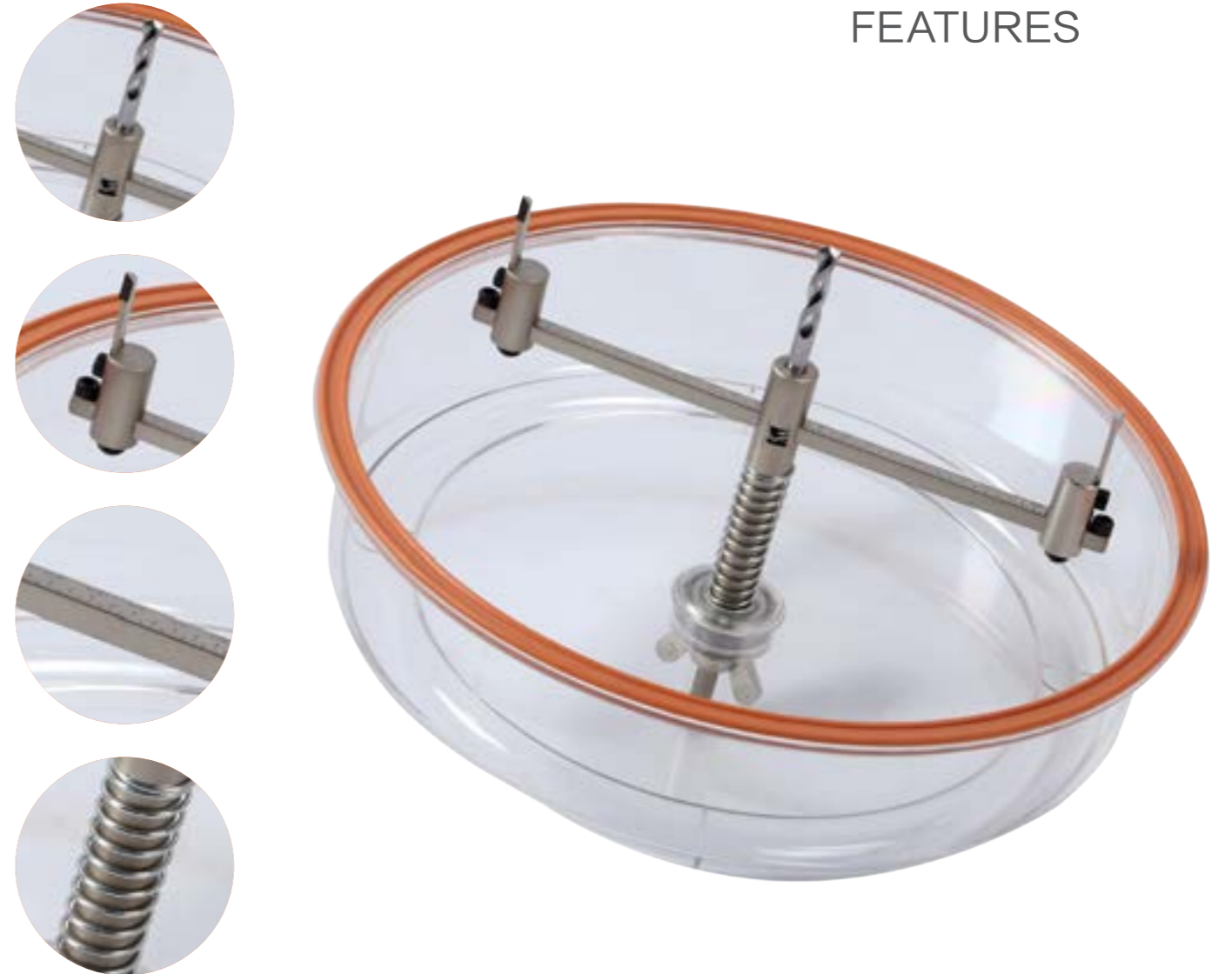
应用材料 / Applicable materials

广泛应用于三合板，石膏板，亚克力板，塑料板，薄钢板，超薄钢板、硬纸板，木板等材料。

Plywood, gypsum, acrylic plates, plastic, thin and ultra-thin metal sheet, chip-boards, board etc..

产品特点

FEATURES



- 我们使用高品质的 PVC 材料，可以很好的保护使用者，整个操作过程安全与清洁。
We provide high grade PVC to protect operator, It works safety and cleaning of the environment.
- 刀片为高品质的高速钢和高品质 YG8 合金。刀片经过仔细打磨可自由控制切削直径。
The blade is made of high-grade H.S.S. and alloy steel for YG8. The cutting edge is polished carefully and can regulate the cutting diameter at ease.
- 两片高速钢刀片和两片合金钢刀片可自由拆卸更换。
The double H.S.S. blades and double T.C.T. blades can be disassembled freely to change.
- 使用者根据自己的需要调节开孔尺寸，刀刃有合理的切削角度。
Operator can make sure the needed diameter of a hole according to the visual scale label. The edge of the cutter has reasonable cutting angle.

可调节式开孔器

ADJUSTABLE HOLE SAWS



应用材料 / Applicable materials

可调节开孔器应用于屋顶，墙壁和地板。

For cutting circles in roofs, walls and floors.

适用于 1mm 以下厚度的铝板，铜板，钢板。

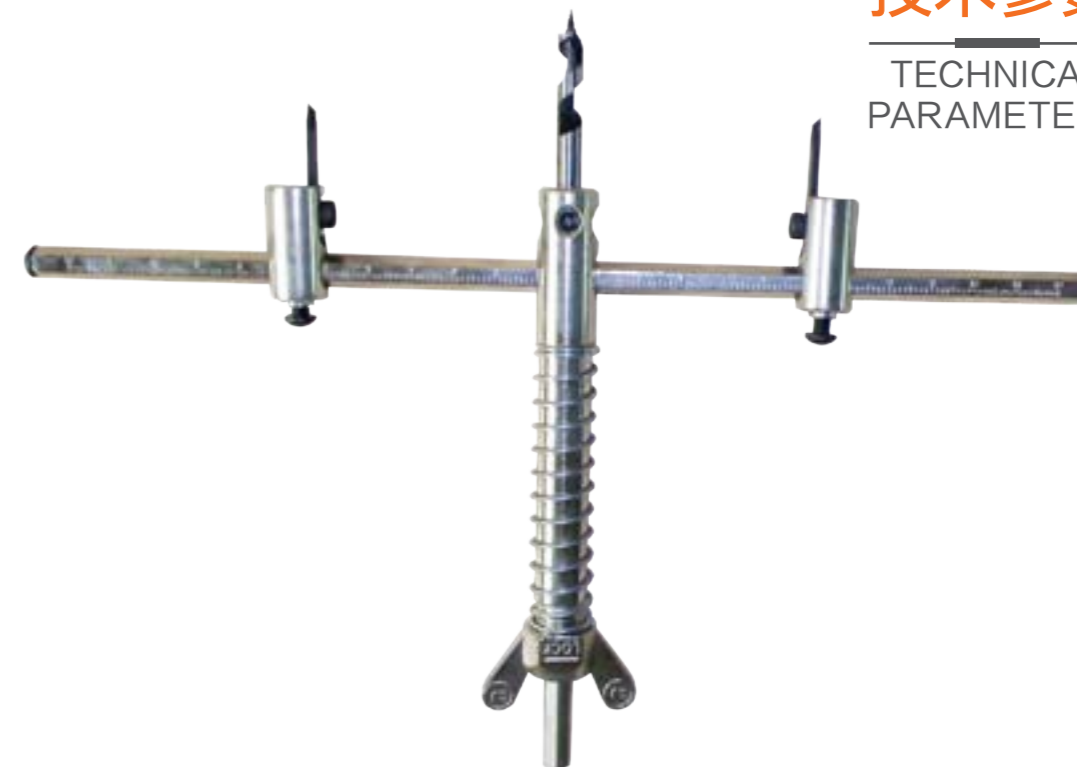
For cuts in Aluminum, brass, sheet metals up to 1mm thickness.



✘ 无防尘罩效果
NO DUST COVER

技术参数

TECHNICAL
PARAMETERS



型号 / ITEM	SJ200	SJ250	SJ300
规格 / SPEC	40-200	40-250	30-300
最大孔径 / Max Diameter	200mm	250mm	300mm
最小孔径 / Min Diameter	30mm	30mm	30mm
公差尺寸 / Tolerance	1mm	1mm	1mm
切削材料深度 / Cutting Depth	35mm	35mm	35mm
外形尺寸 / Case Size	33 × 13.5 × 13.5CM	41 × 13.5 × 41CM	41 × 13.5 × 41CM
重量 / Weight	2.5kg	3.7kg	4.0kg

* 开孔尺寸在 120mm 以下最大转速 600rpm。

Max speed for cutting holes up to 120mm is 600rpm.

Shank Size (柄的尺寸) : Three sides or SDS 9.5

Chuck Size (卡盘尺寸) : 9.5

Fit Saws (适合锯) : 1-1/4~7-1/2

Shank Size (柄的尺寸) : Three sides or SDS 9.5

Chuck Size (卡盘尺寸) : 9.5

Fit Saws (适合锯) : 1-1/4~11

可调节式开孔器

ADJUSTABLE HOLE SAWS



应用材料 / Applicable materials

广泛应用于三合板, 石膏板, 亚克力板, 塑料板, 薄钢板, 超薄钢板、硬纸板, 木板等材料。

Plywood, gypsum, acrylic plates, plastic, thin and ultra-thin metal sheet, chip-boards, board etc..

型号 / ITEM	SJ200	SJ300
规格 / SPEC	40-200	30-300
最大孔径 / Max Diameter	200mm	300mm
最小孔径 / Min Diameter	30mm	30mm
公差尺寸 / Tolerance	1mm	1mm
切削材料深度 / Cutting Depth	35mm	35mm

瓷砖开孔器

ADJUSTABLE CERAMIC
TILE HOLE CUTTER



材质为高品质的 45# 钢, 采用专业技术研制而成的硬质合金刀头, 坚固耐用, 超耐磨损, 可更换刀粒。专注于瓷砖的快速开孔作业, 适用范围 30mm-120mm。

The adjustable ceramic tile hole cutter used by high quality S45C.

The professional technology developed of alloy blade to be sturdy and durable. And the alloy blade can be change. Range to: 30mm-120mm

ITEM NO.: 106100

Shank Size (柄的尺寸)	8.5mm
Chuck Size (卡盘尺寸)	8.6mm
Fit Saws (适合锯)	30mm-120mm 1-3/16"-4-23/32"

木工开孔器

ADJUSTABLE WOOD
HOLE CUTTER



优选进口合金刀刃, 锋利度高, 专注于木工制品的快速开孔作业, 适用范围 30mm-150mm。

Select imported alloy blade, high sharpness to cutting for wood. Range to: 30mm-150mm

ITEM NO.: 106101

Shank Size (柄的尺寸)	8.5mm
Chuck Size (卡盘尺寸)	8.6mm
Fit Saws (适合锯)	30mm-150mm 1-3/16"-5-29/32"

钢板开孔器

METAL SHEET PUNCH



应用材料 / Applicable materials

专注于钢板开孔，三等分理想齿行，具备很好的穿孔能力。

最大切割深度 2mm，应用于铜，铁，锌，铝。

优势：使用寿命长。

The sheet metal punches have great cutting ability of the trisection teeth.

The maximum cutting depth is 2mm. Application to up to 3.5mm mild steel, sheet copper, sheet iron, sheet aluminum etc.

Advantage: Long service life, easy installation

产品细节

PRODUCT DETAILS

我们采用进口轴承钢，淬火后硬度更高，产品更为耐用。

We provide high quality imported GCr15 to produce the sheet metal punches.

The hardness is more higher and better when after quenching. The product is more durable.



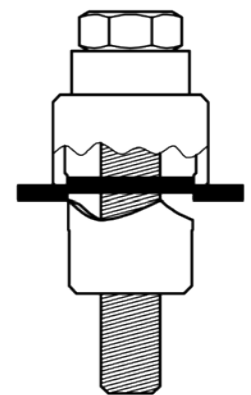
钢板开孔器分为带轴承和不带轴承两种，每种都配备多种型号，可满足客户多种选择。

We have two kinds of sheet metal punches. They are bearing sheet metal punches and non-bearing sheet metal punches. The range is 12.7mm to 90mm.



Specifications	Fits size(L)	Outside hex size(D)
108127	12.7	13
108190	19	17
108254	25.4	17
108320	32	19
108505	50.5	22
108635	63.5	22
108760	76	22

★ Diameter from 12.7mm to 90mm



螺栓螺母取出器

DAMAGED BOLTS & NUTS EXTRACTORES



TypeA



TypeB

应用材料 /Applicable materials

广泛应用于取出各种破损螺栓，打滑螺栓、螺母等；使用范围 9mm~19mm

Application to: These screw extractors enable rounded or rusted hexagonal screws and nuts on threaded bolts to be removed.

Just attach the necessary extractor screw and turn it anticlockwise with a spanner or wrench.

The special moulding catches onto the screw to be removed and loosens it.

产品套装

PRODUCT SET

在两款套装当中配备多种大小，选择多样，适配各种螺母，螺栓，省心省力。

It has Type A and Type B. They are various sizes to adapt to different sizes of bolts and nuts. It's very easy to removal.



我们采用高品质的 40CR 材料，淬火后硬度更高，韧性更强，有效提高产品的使用年限。

It used by 40Cr for the damaged nut extractor. It has great hardness and used for a long lifetime.



ITEM NO.	Fits hex size(L)	Outside hex size(D)
107001	9mm	16mm
107002	10mm	16mm
107003	11mm	19mm
107004	12mm	19mm
107005	13mm	19mm
107006	14mm	22mm
107007	15mm	22mm
107008	16mm	25mm
107009	17mm	25mm
107010	19mm	27mm

ITEM NO.	Fits hex size(L)	Outside hex size(D)
107101	9mm	16mm
107102	10mm	16mm
107103	11mm	17mm
107104	12mm	19mm
107105	13mm	19mm
107106	14mm	21mm
107107	15mm	22mm
107108	16mm	24mm
107109	17mm	24mm
107110	19mm	27mm

孔锯接杆

HOLE SAW ARBOR



应用材料 / Applicable materials

于所有双金属开孔器，碳钢开孔器，硬质合金开孔器等

适配的连接杆：适配范围 15mm~300mm。

优质碳钢制造，整体热处理硬化

常用定位钻头为高速钢

The hole saw arbor is used for Bi-metal hole saw and T.C.T. hole cutter etc.

We produce various specification hole saw arbor.

Hardened carbon steel for strength through the cross-section.

Nine regular models are available, each furnished with a 6.35mm(1/4") pilot drill. Set-screw in the body allows easy replacement of the pilot drill

Split point pilot drill for faster penetration and less walking.

Adapts Morse hole saws to any power drill

产品细节介绍

PRODUCT DETAILS



ITEM NO.: 105001

Shank Size (柄的尺寸)	1/4 Round
Chuck Size (卡盘尺寸)	1/4
Thread Size (螺纹尺寸)	1/2-20
Fit Saws (适合锯)	9/16~1-3/16



ITEM NO.: 105002

Shank Size (柄的尺寸)	3/8 Hex
Chuck Size (卡盘尺寸)	3/8
Thread Size (螺纹尺寸)	1/2-20
Fit Saws (适合锯)	9/16~1-3/16



ITEM NO.: 105003

Shank Size (柄的尺寸)	7/16 Hex
Chuck Size (卡盘尺寸)	1/2
Thread Size (螺纹尺寸)	1/2-20
Fit Saws (适合锯)	9/16~1-3/16



ITEM NO.: 105004

Shank Size (柄的尺寸)	3/8 Hex
Chuck Size (卡盘尺寸)	3/8
Thread Size (螺纹尺寸)	1/2-20
Fit Saws (适合锯)	9/16~1-3/16



ITEM NO.: 105005

Shank Size (柄的尺寸)	7/16 Hex
Chuck Size (卡盘尺寸)	1/2
Thread Size (螺纹尺寸)	5/8-18
Fit Saws (适合锯)	1-1/4~8-17/64



ITEM NO.: 105006

Shank Size (柄的尺寸)	7/16 Hex
Chuck Size (卡盘尺寸)	1/2
Thread Size (螺纹尺寸)	5/8-18
Fit Saws (适合锯)	1-1/4~8-17/64



ITEM NO.: 105007

Shank Size (柄的尺寸)	3/8 Hex
Chuck Size (卡盘尺寸)	3/8
Thread Size (螺纹尺寸)	5/8-18
Fit Saws (适合锯)	1-1/4~8-17/64



ITEM NO.: 105008

Shank Size (柄的尺寸)	7/16 Hex
Chuck Size (卡盘尺寸)	1/2
Thread Size (螺纹尺寸)	5/8-18
Fit Saws (适合锯)	1-1/4~8-17/64

产品细节介绍

PRODUCT DETAILS



ITEM NO.: 105010-L

Shank Size (柄的尺寸)	SDS Plus
Chuck Size (卡盘尺寸)	SDS
Thread Size (螺纹尺寸)	1/2-20
Fit Saws (适合锯)	9/16~1-3/16

ITEM NO.: 105011-T

Shank Size (柄的尺寸)	SDS Plus
Chuck Size (卡盘尺寸)	SDS
Thread Size (螺纹尺寸)	5/8-18
Fit Saws (适合锯)	1-1/4~8-17/64



ITEM NO.: 105011-L

Shank Size (柄的尺寸)	SDS Plus
Chuck Size (卡盘尺寸)	SDS
Thread Size (螺纹尺寸)	5/8-18
Fit Saws (适合锯)	1-1/4~8-17/64



ITEM NO.: 105021

Shank Size (柄的尺寸)	SDS Plus
Chuck Size (卡盘尺寸)	SDS
Thread Size (螺纹尺寸)	5/8-18
Fit Saws (适合锯)	1-1/4~8-17/64



ITEM NO.: 1051AA1

Shank Size (柄的尺寸)	3/8 Hex
Chuck Size (卡盘尺寸)	3/8
Thread Size (螺纹尺寸)	1/2-20
Fit Saws (适合锯)	9/16~1-3/16



ITEM NO.: 1051AA2

Shank Size (柄的尺寸)	7/16 Hex
Chuck Size (卡盘尺寸)	1/2
Thread Size (螺纹尺寸)	5/8-18
Fit Saws (适合锯)	1-1/4~8-17/64



ITEM NO.: 1051AA4

Shank Size (柄的尺寸)	1/4 Round
Chuck Size (卡盘尺寸)	1/4
Thread Size (螺纹尺寸)	1/2-20
Fit Saws (适合锯)	9/16~1-3/16



ITEM NO.: 1051AA10

Shank Size (柄的尺寸)	3/8 Hex
Chuck Size (卡盘尺寸)	3/8
Thread Size (螺纹尺寸)	5/8-18
Fit Saws (适合锯)	1-1/4~8-17/64

产品细节介绍

PRODUCT DETAILS



ITEM NO.: 105161-1-A

Shank Size (柄的尺寸)	1/4 Round
Chuck Size (卡盘尺寸)	1/4
Thread Size (螺纹尺寸)	1/2-20
Fit Saws (适合锯)	9/16~1-3/16



ITEM NO.: 105032C

Shank Size (柄的尺寸)	3/8 Hex
Chuck Size (卡盘尺寸)	3/8
Thread Size (螺纹尺寸)	5/8-18
Fit Saws (适合锯)	1-1/4~8-17/64



ITEM NO.: 105015-S

Shank Size (柄的尺寸)	8.6 Hex
Chuck Size (卡盘尺寸)	8.6
Thread Size (螺纹尺寸)	5/8-18
Fit Saws (适合锯)	1-1/4"~8-17/64"



ITEM NO.: 105015-B

Shank Size (柄的尺寸)	7/16 Hex
Chuck Size (卡盘尺寸)	1/2 mm
Thread Size (螺纹尺寸)	5/8-18
Fit Saws (适合锯)	1-1/4"~8-17/64"



ITEM NO.: 105166

Shank Size (柄的尺寸)	8.8 Hex/7.3 Rgroove
Chuck Size (卡盘尺寸)	
Thread Size (螺纹尺寸)	1/2-20
Fit Saws (适合锯)	9/16~1-3/16



ITEM NO.: 105170

Shank Size (柄的尺寸)	7/16 Hex
Chuck Size (卡盘尺寸)	1/2
Thread Size (螺纹尺寸)	5/8-18
Fit Saws (适合锯)	1-1/4~8-17/64



ITEM NO.: 105171-00

Shank Size (柄的尺寸)	
Chuck Size (卡盘尺寸)	
Thread Size (螺纹尺寸)	9/16-18
Fit Saws (适合锯)	



ITEM NO.: 105171-01

Shank Size (柄的尺寸)	
Chuck Size (卡盘尺寸)	
Thread Size (螺纹尺寸)	9/16-18
Fit Saws (适合锯)	



ITEM NO.: 105105

Shank Size (柄的尺寸)	8.6 Hex/7.3 Rgroove
Chuck Size (卡盘尺寸)	
Thread Size (螺纹尺寸)	5/8-18
Fit Saws (适合锯)	1-1/4~8-17/64



ITEM NO.: 105143

Shank Size (柄的尺寸)	8.0 Hex
Chuck Size (卡盘尺寸)	8
Thread Size (螺纹尺寸)	9/16-18
Fit Saws (适合锯)	



ITEM NO.: 10517461

Shank Size (柄的尺寸)	Adapter arbors with 1/2-20
Chuck Size (卡盘尺寸)	threads to fit hkle saws
Thread Size (螺纹尺寸)	5/8-18 threads
Fit Saws (适合锯)	



ITEM NO.: 105172

Shank Size (柄的尺寸)	
Chuck Size (卡盘尺寸)	
Thread Size (螺纹尺寸)	1/2-20
Fit Saws (适合锯)	



ITEM NO.: 105153

Shank Size (柄的尺寸)	7/16 Hex
Chuck Size (卡盘尺寸)	1/2
Thread Size (螺纹尺寸)	5/8-18
Fit Saws (适合锯)	1-1/4~8-17/64



ITEM NO.: 105173

Shank Size (柄的尺寸)	1/4 Hex
Chuck Size (卡盘尺寸)	1/4
Thread Size (螺纹尺寸)	1/2-20
Fit Saws (适合锯)	9/16~1-3/16

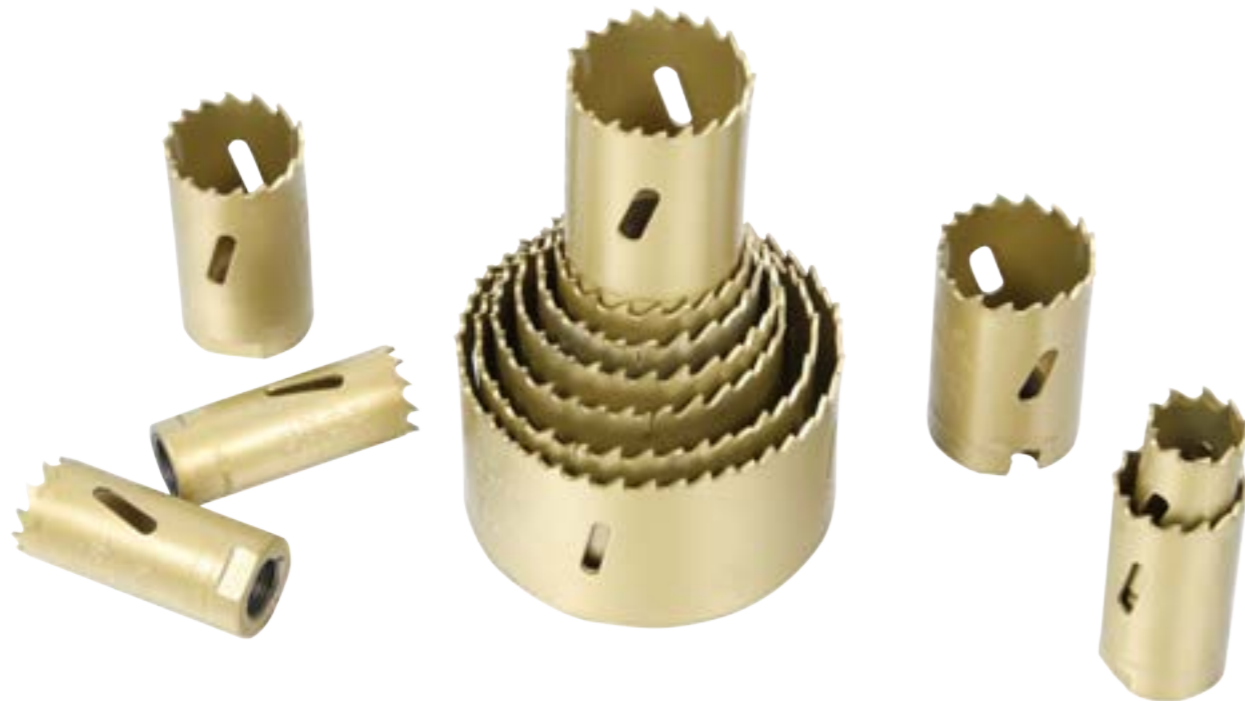


ITEM NO.: 105202

5-1/2" (140mm) Extension for Shank of 7/16" Hex (& 3/8" Hex) arbors
10" (250mm) Extension for Shank of 7/16" Hex (& 3/8" Hex) arbors
12" (300mm) Extension for Shank of 7/16" Hex (& 3/8" Hex) arbors
13" (330mm) Extension for Shank of 7/16" Hex (& 3/8" Hex) arbors
18" (450mm) Extension for Shank of 7/16" Hex (& 3/8" Hex) arbors

双金属孔锯

BI-METAL HOLE SAW



应用材料 / Applicable materials

独特齿部设计，锋利无比，齿部硬化处理，经久耐用，开孔寿命长。
可在不锈钢，钢，铝，水管，木材，塑料，石膏板等材料上开孔作业。
可提供产品规格 14mm-210mm
提供切削深度 35mm-48mm
可提供齿部材料选择 M2, M3, M42。

Bi-metal hole saws are constructed of hardened, heat and abrasion resisting high speed steel teeth with a tough alloy body and cap.

Bi-metal designed and constructed by electron beam welding to deliver long life against heavy duty and tough job. Ideal for Drilling Wood, Plastic, Aluminum, Metal and Stainless Steel

4/6 variable pitch teeth for reduced noise and improved finishing performance. Variable Depth Gullets provides more efficient chip clearance. Optimized cutting forms achieve up to 2x faster cuttings

Includes sizes from 14mm(9/16") to 210mm(8-5/16").

Produces cutting depth from 35mm(1-3/8") to 48mm(1-7/8").

Provides three choices for teeth material: M2, M3, M42.

产品套装

PRODUCT SET



Art No.	Sets	Unit Price
	9PC Hole Saws Set	
10106002	Saws Set	
6PC Hole Saws: 3/4" (19mm), 7/8" (22mm), 1-1/8" (29mm)		
1-1/2" (38mm), 1-3/4" (44mm), 2-1/4" (57mm)		
2PC Arbors: 3/8" Hex, Fit 14 - 30mm; 7/16"Hex, Fit 32 - 210mm		
1PC Adapter: 1/2-20UNF - 5/8-18UNF		



Art No.	Sets	Unit Price
	9PC Hole Saws Set	
10106004	Saws Set	
6PC Hole Saws: 3/4" (19mm), 7/8" (22mm), 1-1/8" (29mm)		
1-1/2" (38mm), 1-3/4" (44mm)		
2-11/16" (68mm)		
2PC Arbors: 3/8" Hex, Fit 14 - 30mm; 7/16"Hex, Fit 32 - 210mm		
1PC Adapter: 1/2-20UNF - 5/8-18UNF		



Art No.	Sets	Unit Price
	13PC Hole Saws Set	
10106006	Saws Set	
9PC Hole Saws: 3/4" (19mm), 7/8" (22mm)		
1-1/8" (29mm), 1-3/8" (35mm)		
1-1/2" (38mm), 1-3/4" (44mm), 2" (51mm)		
2-1/4" (57mm), 2-1/2" (64mm)		
2PC Arbors: 3/8" Hex, Fit 14 - 30mm; 7/16"Hex, Fit 32 - 210mm		
1PC Drills: 1/4" x 105mm		
1PC Adapter: 1/2-20UNF - 5/8-18UNF		



Art No.	Sets	Unit Price
	13PC Hole Saws Set	
10106006	Saws Set	
9PC Hole Saws: 3/4" (19mm), 7/8" (22mm)		
1-1/8" (29mm), 1-3/8" (35mm)		
1-1/2" (38mm), 1-3/4" (44mm), 2" (51mm)		
2-1/4" (57mm), 2-1/2" (64mm)		
2PC Arbors: 3/8" Hex, Fit 14 - 30mm; 7/16"Hex, Fit 32 - 210mm		
1PC Drills: 1/4" x 105mm		
1PC Adapter: 1/2-20UNF - 5/8-18UNF		



Art No.	Sets	Unit Price
	6PC Hole Saws Set	
10105001	Saws Set	
4PC Hole Saws: 2-1/2" (64mm), 3" (76mm), 3-1/2" (89mm)		
4" (102mm)		
1PC Arbor: 7/16"Hex, Fit 32 - 210mm		
1PC Drill: 1/4" x 76mm		



Art No.	Sets	Unit Price
	15PC Hole Saws Set	
10105013	Saws Set	
11PC Hole Saws: 3/4" (19mm), 7/8" (22mm), 1" (25mm)		
1-1/4" (32mm), 1-3/8" (35mm), 1-1/2" (38mm)		
1-3/4" (44mm), 2" (51mm), 2-1/4" (57mm)		
2-1/2" (64mm), 3" (76mm)		
2PC Arbors: 3/8" Hex, Fit 14 - 30mm; 7/16"Hex, Fit 32 - 210mm		
1PC Extension: 12" for 7/16" shank		
1PC Ejector Spring		



Art No.	Sets	Unit Price
	7PC Hole Saws Set	
10105023	Saws Set	
6pc holesaws		
7/8"(22mm), 1-1/8"(29mm), 1-3/8"(35mm), 1-3/4"(44mm), 2"(51mm), 2-11/16"(68mm)		
2PC Arbor: 1/4round, Fit 14 - 30mm 7/16hex Fit 32-210		
1PC Adapter: 1/2-20UNF - 5/8-18UNF		



Art No.	Sets	Unit Price
	9PC Hole Saws Set	
10105024	Saws Set	
5PC Hole Saws: 7/8" (22mm), 1" (25mm), 1-1/8" (29mm)		
1-1/4" (32mm), 1-1/2" (38mm)		
1PC Arbors: 1/4" Round, Fit 14 - 30mm		
1PC Adapter: 1/2-20UNF - 5/8-18UNF		

Five Advantages of quick adapter:

1. To quick change the hole saw cutter
2. To enlarge the hole cutter without center drill bit
3. To quick quit the center drill bit
4. To cut inclined hole
5. The plug easy to removal